

NORTH ELEVATION

STEEL ROLL UP DOOR WITH SHERWIN WILLIAMS SW9073 DUSTY HEATHER

SCALE: 1/8" = 1'-0"

COLOR BOARD

PAINT COLOR IS BASED ON SHERWIN WILLIAMS

		SW 6128 BLONDE (220,189,146)
		SW 9164 ILLUSIVE GREEN (146,148,141)
		SW 6540 STARRY NIGHT (214,217,222)
		SW 6543 SOULFUL BLUE (117,124,145)
		SW 9166 DRIFT MIST (220,216,208)
		SW 6871 POSITIVE RED (173,44,52)
		SW 6904 GUSTO GOLD (248,172,29)

PPG SOLEX
GREEN TINTED
GLASS

ANODIZED ALUM. WINDOW FRAME

**OMNI CRISMON
SELF STORAGE**
TONY TANG ARCHITECT LTD.



SOUTH ELEVATION

SCALE: 1/8" = 1'-0"

ARCHITECT
TONY TANG ARCHITECT LTD.
3304 N. VALLENCIA LN.
PHOENIX, AZ 85018

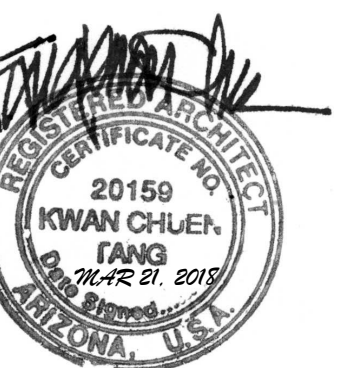
OWNER:
**OMNI CRISMON
SELF STORAGE LLC.**

PROJECT
OMNI CRISMON
SELF STORAGE

PROJECT NO.
2017011

ISSUE
2018 MAR 20

DRAWN BY
TT



EXP. 2019 JUN.



PARTIAL EAST ELEVATION

SCALE: 1/8" = 1'-0"



PARTIAL EAST ELEVATION

SCALE: 1/8" = 1'-0"

ARCHITECT
TONY TANG ARCHITECT LTD.
3304 N. VALLENCIA LN.
PHOENIX, AZ 85018

OWNER:
OMNI CRISMON
SELF STORAGE LLC.

PROJECT
OMNI CRISMON
SELF STORAGE
PROJECT NO.
2017011

ISSUE
2018 MAR 20
DRAWN BY
TT



EXP. 2019 JUN.



PARTIAL WEST ELEVATION

SCALE: 1/8" = 1'-0"



PARTIAL WEST ELEVATION

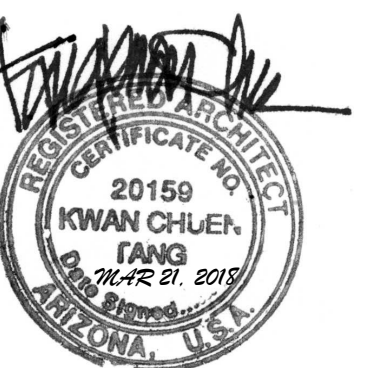
SCALE: 1/8" = 1'-0"

ARCHITECT
TONY TANG ARCHITECT LTD.
3304 N. VALLENCIA LN.
PHOENIX, AZ 85018

OWNER:
OMNI CRISMON
SELF STORAGE LLC.

PROJECT
OMNI CRISMON
SELF STORAGE
PROJECT NO.
2017011

ISSUE
2018 MAR 20
DRAWN BY
TT



EXP. 2019 JUN.



VIEW FROM CRISMON ROAD

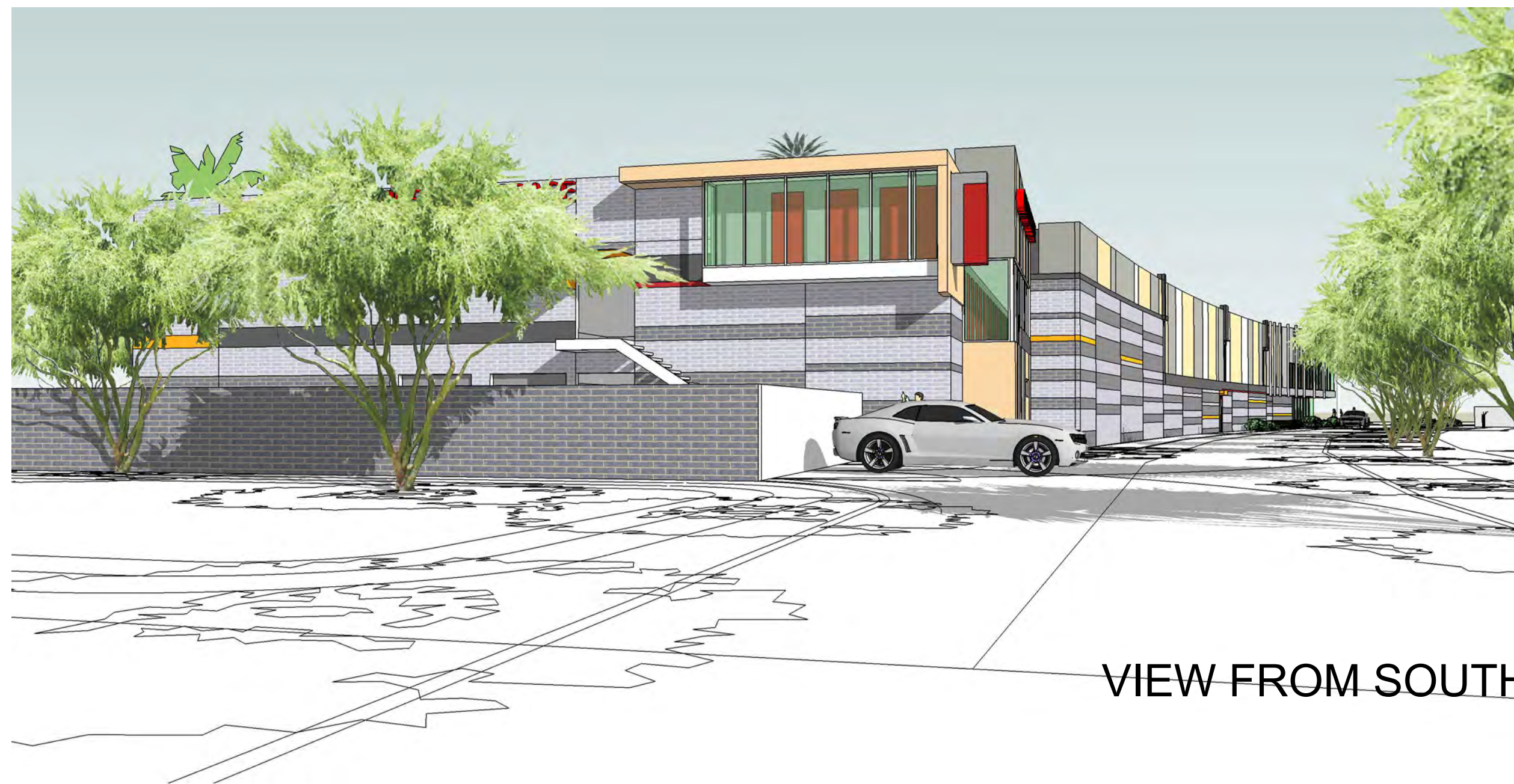


BIRDSEYE VIEW FROM NORTH

OMNI CRISMON SELF STORAGE



BIRDSEYE VIEW FROM SOUTH



VIEW FROM SOUTH



MAIN BUILDING ENTRANCE

TONY TANG ARCHITECT LTD.
3304 N. VALENCIA LANE
PHOENIX, AZ 85018

CLIENT
Client Name
12345 Main Street
New York, NY 00000
Tel: 000.000.0000

PROJECT
Project Name
PROJECT NO.
245.170

ISSUE
MM.DD.YY
DRAWN BY
NH, MB



EXP. 2019 JUN

This drawing is an instrument of service, and shall remain the property of the architect. This drawing shall not be reproduced or used for any purpose, in whole or in part, without the written consent of the architect.

sheet title:

OMNI CRISMON SELF STORAGE

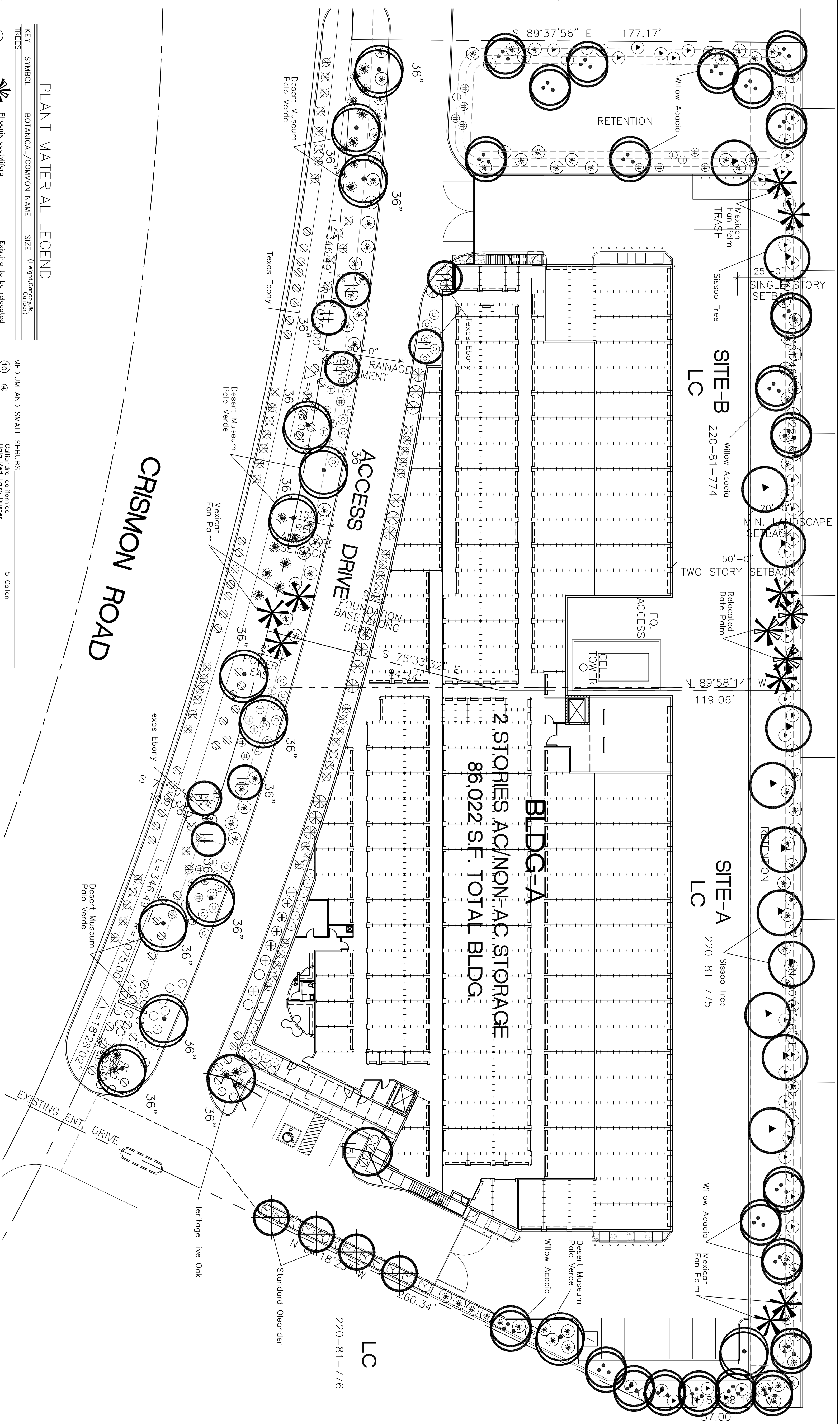
1858 S. CRISMON RD. MESA, ARIZONA 85209

project: 2018 MAY 01 date: 20170111 revision:

Table with 2 columns: revision number, date, description

L10

PRELIMINARY NOT FOR CONSTRUCTION

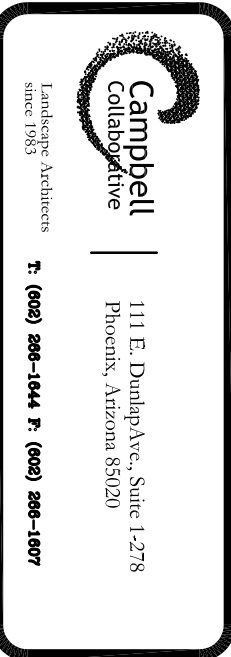
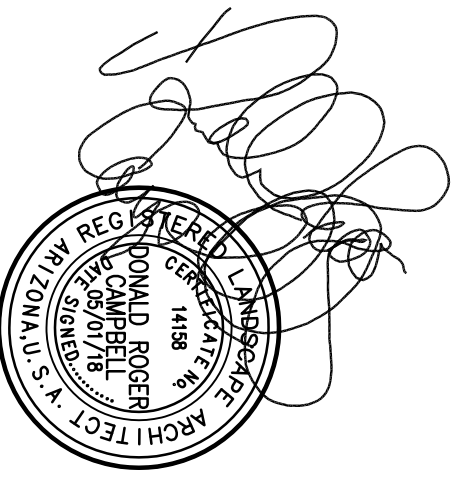


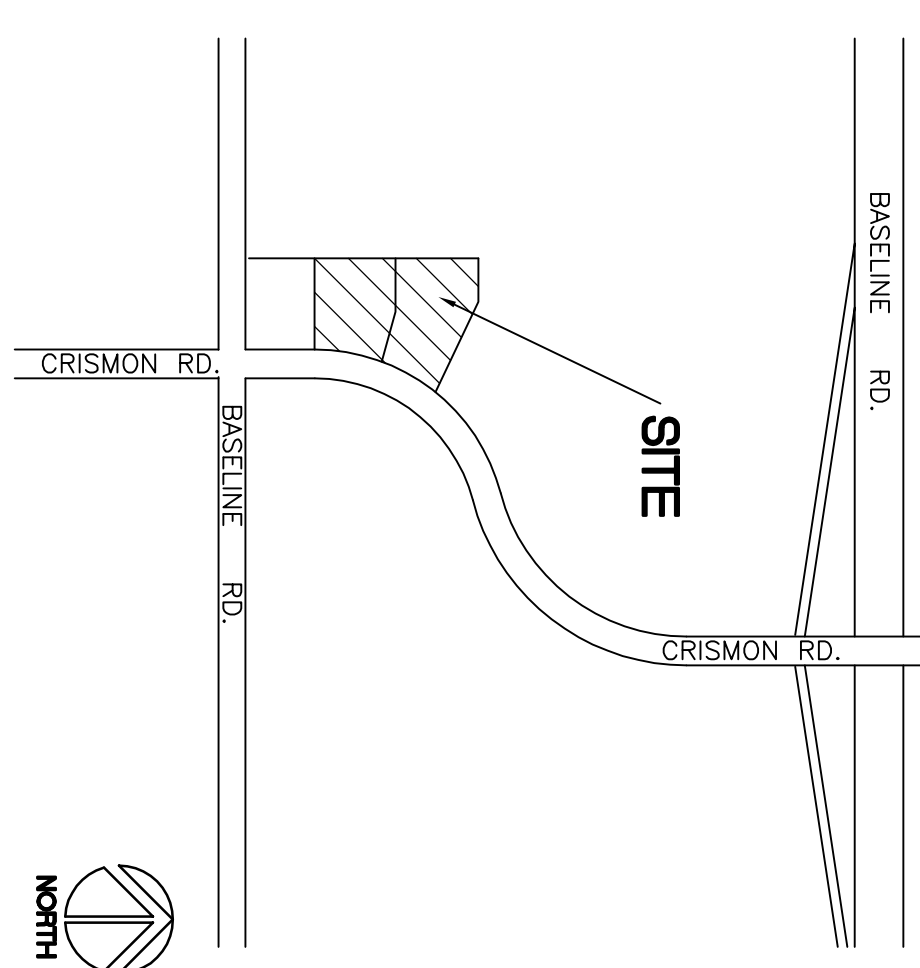
PLANT MATERIAL LEGEND

Legend table with columns: KEY SYMBOL, BOTANICAL/Common Name, SIZE (Height/Spread), and notes like 'Existing to be relocated'.

PRELIMINARY LANDSCAPE PLAN

SCALE 1"=20'-0"





VICINITY MAP N.T.S.

- NOTES**
1. REFER TO LANDSCAPE PLAN FOR EXACT LANDSCAPE DESIGN.
 2. REFER TO CIVIL DRAWING FOR SITE RETENTION.

PROJECT NARRATIVE

THE PROJECT WILL CONSIST OF A 2 STORY SELF STORAGE BUILDING PARALLEL TO CRISMON ROAD AND WILL HOUSE THE SCALE OFFICE IN THE REAR PORTION OF THE SITE. THE BUILDING EXTERIOR WALL WILL BE METAL DECK WITH CONCRETE TOPPING, ROOF WILL BE STEEL CONSTRUCTION. ROOFING WILL BE TPO ROOFING MATERIAL OR APPROVED EQUAL PRODUCTS. THE ENTIRE BUILDING WILL HAVE THE STATE OF THE ART MONITORING AND SECURITY SYSTEM TO ENSURE SAFETY. THE EXTERIOR MATERIAL WILL HAVE PAINTED CMU WALL ARCHITECTURE WITH THE USE OF MULTI-COLOR PATTERNS WILL BREAK IT AS MORE A NEIGHBORHOOD SCALE. YET THE OVERALL DESIGN SCHEME WILL BE SIMPLE AND ELEGANT. THEREP DOOR AREAS AT THE BACK.

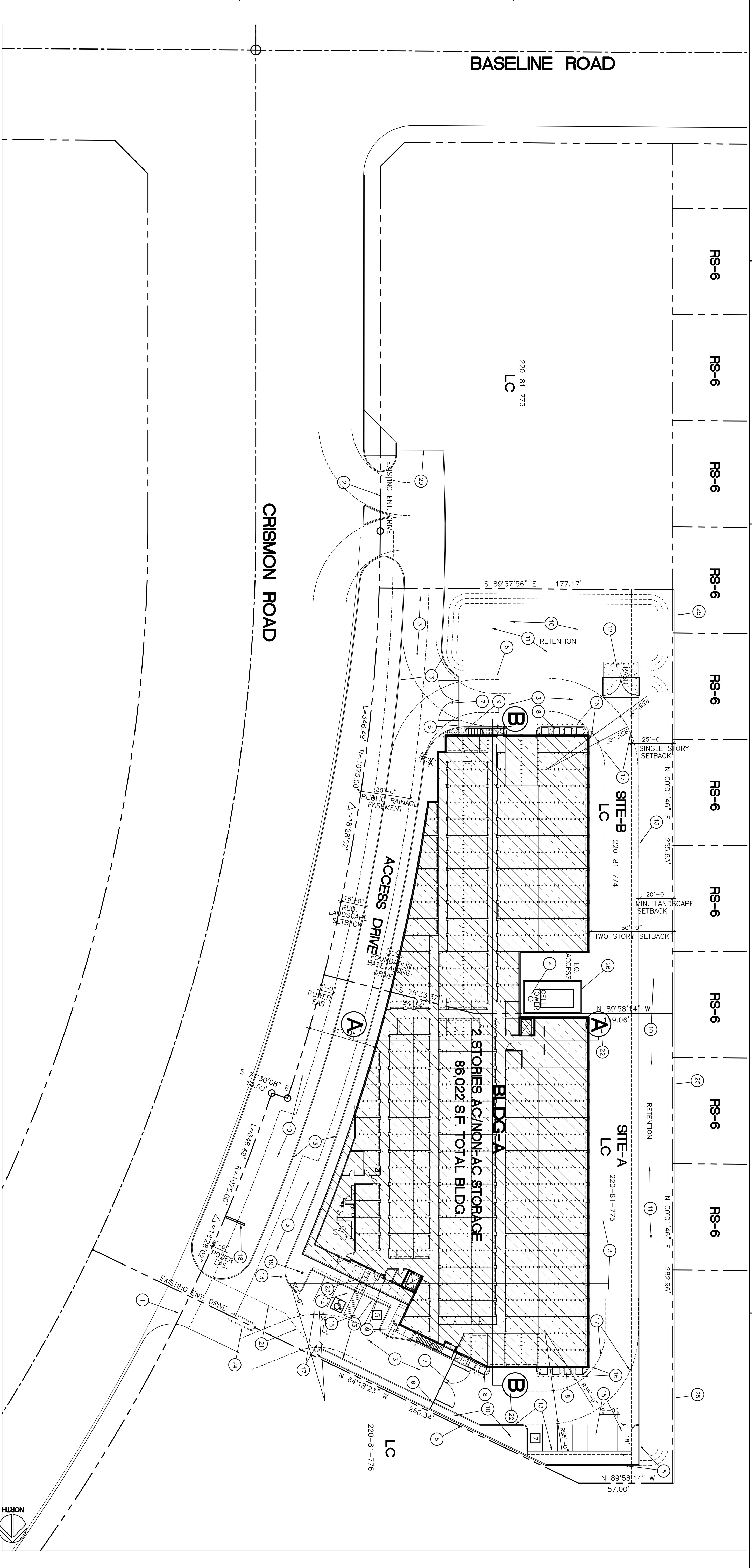
- PROJECT DATA**
1. EXISTING ENTRANCE DRIVE TO REMAIN.
 2. NEW RIGHT IN AND RIGHT OUT ENTRANCE DRIVE.
 3. EXISTING CELL PHONE TOWER TO REMAIN.
 4. NEW 6" CMU SCREEN WALL.
 5. NEW WROUGHT IRON FENCE.
 6. NEW AUTOMATIC WROUGHT IRON FENCE GATE.
 7. LOCATION FOR GROUND MOUNTED A/C UNIT LOCATION, EXACT LOCATIONS MAY VARY.
 8. CONCRETE SITE WALK AREA.
 9. LANDSCAPE AREA, REFER TO LANDSCAPE PLAN.
 10. SURFACE SITE RETENTION AREA, REFER TO CIVIL DRAWINGS.
 11. LANDSCAPE AREA, SEE LANDSCAPE PLAN.
 12. NEW DOUBLE TRASH ENCLOSURE WITH SOLID GATE PER CITY OF MESA STANDARD.

13. 6" CONCRETE CURB TYPICAL.
14. ADA PARKING SPACE WITH SIGN POST IN FRONT AS PER CITY OF MESA STANDARD.
15. STANDARD PARKING SPACE.
16. 6" DIAMETER STEEL BOLLARD x4' HIGH, PAINTED BRIGHT YELLOW.
17. FIRE TRUCK TURNING RADIUS.
18. NEW PROPOSED MONUMENT SIGN, WILL REQUIRE SEPARATE SIGN PERMIT.
19. NEW 45' FLAG POLE.
20. TERMINATE DRIVE AT THIS LOCATION.
21. REMOVE EXISTING CURB.
22. BUILDING SECTION KEY.
23. PUBLIC ENTRANCE FOUNDATION BASE, MIN. REQUIRED TO BE 15'.
24. REMOVE EXISTING CURB AND LANDSCAPE

25. ISLAND TO ALLOW FIRE TRUCK ACCESS.
26. EXISTING 8" CMU SCREEN WALL SURROUNDING CELL TOWER WITH ACCESS GATE.

PROJECT DATA

SITE AREA:	63,965 S.F.
SITE-A	47,938 S.F.
SITE-B	
TOTAL SITE AREA:	111,903 S.F.(2.57 AC.)
ZONING:	LC (LIGHT COMMERCIAL)
BUILDING AREA:	GROSS BLDG. STO. AREA
1ST FLOOR:	44,135 S.F. 35,090 S.F.
2ND FLOOR:	43,846 S.F. 31,855 S.F.
TOTAL AREA:	87,981 S.F. 66,945 S.F.
LEASABLE AREA EFFICIENCY:	76.09 %
STANDARD PARKING:	4 SPACES (+2 MANAGER QUARTER)
PARKING REQ.:	(THERE IS NO MANAGER QUARTER)
PARKING PROVIDED:	12 SPACES



PRELIMINARY SITE PLAN - 257 AC. SITE 2018.AN116

SCALE : 1"=30'-0"

PRELIMINARY NOT FOR CONSTRUCTION

2017011

tony tang architect

3304 N. VALENCIA IN. PHOENIX, AZ 85018
tel:(480) 947-8501

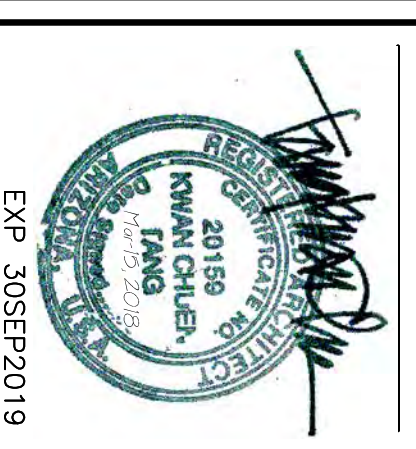
kett55@gmail.com
this drawing is an instrument of service, and shall remain the property of the architect. this drawing shall not be reproduced or used for any purpose in whole or in part without the written consent of the architect.

sheet title:
PRELIMINARY SITE PLAN

project:
OMNI CRISMON SELF STORAGE

1858 S. CRISMON RD.
MESA, ARIZONA 85209

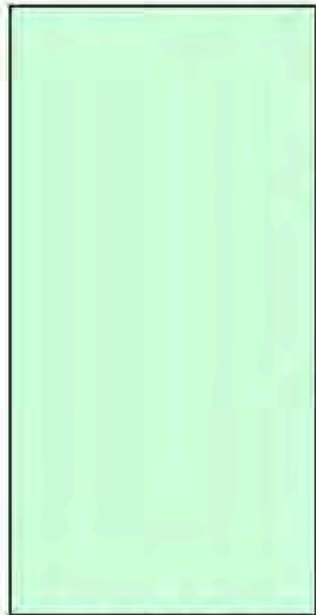
date: 2017.MAY.04
revision: 2017.JAN.11
revision: 2017.AUG.07



A11
2017011

COLOR BOARD

PAINT COLOR IS BASED ON SHERWIN WILLIAMS



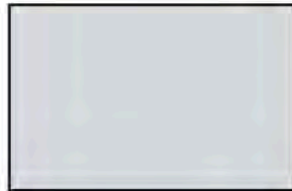
PPG SOLEX
GREEN TINTED
GLASS



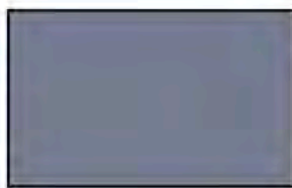
SW 6128 BLONDE
(220,189,146)



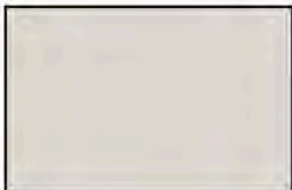
SW 9164 ILLUSIVE GREEN
(146,148,141)



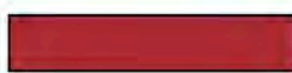
SW 6540 STARRY NIGHT
(214,217,222)



SW 6543 SOULFUL BLUE
(117,124,145)



SW 9166 DRIFT MIST
(220,216,208)



SW 6871 POSITIVE RED
(173,44,52)



SW 6904 GUSTO GOLD
(248,172,29)

ANODIZED ALUM. WINDOW FRAME



**OMNI CRISMON
SELF STORAGE**

TONY TANG ARCHITECT LTD.



D-Series Size 1 LED Wall Luminaire



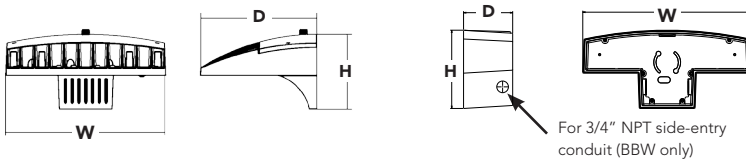
d#series

Specifications Luminaire

Width:	13-3/4" (34.9 cm)	Weight:	12 lbs (5.4 kg)
Depth:	10" (25.4 cm)		
Height:	6-3/8" (16.2 cm)		

Back Box (BBW, ELCW)

Width:	13-3/4" (34.9 cm)	BBW Weight:	5 lbs (2.3 kg)
Depth:	4" (10.2 cm)	ELCW Weight:	10 lbs (4.5 kg)
Height:	6-3/8" (16.2 cm)		



Catalog
Number

Notes

Type

Hit the Tab key or mouse over the page to see all interactive elements.

Introduction

The D-Series Wall luminaire is a stylish, fully integrated LED solution for building-mount applications. It features a sleek, modern design and is carefully engineered to provide long-lasting, energy-efficient lighting with a variety of optical and control options for customized performance.

With an expected service life of over 20 years of nighttime use and up to 74% in energy savings over comparable 250W metal halide luminaires, the D-Series Wall is a reliable, low-maintenance lighting solution that produces sites that are exceptionally illuminated.

Ordering Information

EXAMPLE: DSXW1 LED 20C 1000 40K T3M MVOLT DDBTXD

DSXW1 LED	Series	LEDs	Drive Current	Color temperature	Distribution	Voltage	Mounting	Control Options	Other Options	Finish (required)																			
DSXW1 LED	10C	10 LEDs (one engine)	350	350 mA	30K	3000 K	T2S	Type II Short	MVOLT ¹	Shipped included (blank) Surface mounting bracket	Shipped installed PE Photoelectric cell, button type ⁴	Shipped installed SF Single fuse (120, 277 or 347V) ⁷	DDBXD	Dark bronze															
			530	530 mA	40K	4000 K	T2M	Type II Medium	120 ¹						BBW Surface-mounted back box (for conduit entry) ³	DMG 0-10V dimming driver (no controls)	DF Double fuse (208, 240 or 480V) ⁷	DBLXD	Black										
			700	700 mA	50K	5000 K	T3S	Type III Short	208 ¹											PIR 180° motion/ambient light sensor, <15' mtg ht ⁵	DWHXD	White							
			1000	1000 mA (1 A)	AMBPC	Amber phosphor converted	T3M	Type III Medium	277 ¹														PIRH 180° motion/ambient light sensor, 15-30' mtg ht ⁵	DSSXD	Sandstone				
							T4M	Type IV Medium	347 ²																	ELCW Emergency battery backup (includes external component enclosure) ⁶	HS House-side shield ⁸	DDBTXD	Textured dark bronze
							TFTM	Forward Throw Medium	480 ²																				
					ASYDF	Asymmetric diffuse		Shipped separately BSW Bird-deterrent spikes	DNATXD	Textured natural aluminum																			
											WG Wire guard	DWHGXD	Textured white																
														VG Vandal guard	DSSTXD	Textured sandstone													
																	DDL Diffused drop lens												

NOTES

- MVOLT driver operates on any line voltage from 120-277V (50/60 Hz). Specify 120, 208, 240 or 277 options only when ordering with fusing (SF, DF options), or photocontrol (PE option).
- Only available with 20C, 700mA or 1000mA. Not available with PIR or PIRH.
- Back box ships installed on fixture. Cannot be field installed. Cannot be ordered as an accessory.
- Photocontrol (PE) requires 120, 208, 240, 277 or 347 voltage option. Not available with motion/ambient light sensors (PIR or PIRH).
- PIR specifies the Sensor Switch SBGR-10-ODP control; PIRH specifies the Sensor Switch SBGR-6-ODP control; see Motion Sensor Guide for details. Includes ambient light sensor. Not available with "PE" option (button type photocell). Dimming driver standard. Not available with 20 LED/1000 mA configuration (DSXW1 LED 20C 1000).
- Cold weather (-20C) rated. Not compatible with conduit entry applications. Not available with BBW mounting option. Not available with fusing. Not available with 347 or 480 voltage options. Emergency components located in back box housing. Emergency mode IES files located on product page at www.lithonia.com
- Single fuse (SF) requires 120, 277 or 347 voltage option. Double fuse (DF) requires 208, 240 or 480 voltage option. Not available with ELCW.
- Also available as a separate accessory; see Accessories information.
- See the electrical section on page 3 for more details.

Accessories

Ordered and shipped separately.

DSXWHS U	House-side shield (one per light engine)
DSXWBSW U	Bird-deterrent spikes
DSXW1WG U	Wire guard accessory
DSXW1VG U	Vandal guard accessory



Performance Data

Lumen Output

Lumen values are from photometric tests performed in accordance with IESNA LM-79-08. Data is considered to be representative of the configurations shown, within the tolerances allowed by Lighting Facts. Contact factory for performance data on any configurations not shown here.

LEDs	Drive Current (mA)	System Watts	Dist. Type	30K					40K					50K					AMBER						
				Lumens	B	U	G	LPW	Lumens	B	U	G	LPW	Lumens	B	U	G	LPW	Lumens	B	U	G	LPW		
10C (10 LEDs)	530mA	20 W	T2S	1,843	1	0	1	92	1,956	1	0	1	98	1,729	1	0	1	86	1,264	0	0	1	63		
			T2M	1,756	1	0	1	88	1,864	1	0	1	93	1,648	1	0	1	82	1,205	0	0	1	60		
			T3S	1,822	0	0	1	91	1,934	0	0	1	97	1,710	0	0	1	86	1,250	0	0	1	63		
			T3M	1,804	1	0	1	90	1,914	1	0	1	96	1,693	1	0	1	85	1,237	0	0	1	62		
			T4M	1,767	1	0	1	88	1,876	1	0	1	94	1,658	0	0	1	83	1,212	0	0	1	61		
			TFTM	1,837	0	0	1	92	1,950	0	0	1	98	1,724	0	0	1	86	1,260	0	0	1	63		
			ASYDF	1,642	1	0	1	82	1,743	1	0	1	87	1,541	1	0	1	77	1,127	0	0	1	56		
			ASDF	2,272	1	0	1	84	2,409	1	0	1	89	2,421	1	0	1	90	1,544	0	0	1	57		
	700mA	27 W	T2M	2,165	1	0	1	80	2,296	1	0	1	85	2,307	1	0	1	85	1,472	0	0	1	55		
			T3S	2,247	1	0	1	83	2,382	1	0	1	88	2,394	1	0	1	89	1,527	0	0	1	57		
			T3M	2,224	1	0	1	82	2,358	1	0	1	87	2,370	1	0	1	88	1,512	0	0	1	56		
			T4M	2,179	1	0	1	81	2,310	1	0	1	86	2,322	1	0	1	86	1,481	0	0	1	55		
			TFTM	2,265	1	0	1	84	2,401	1	0	1	89	2,413	1	0	1	89	1,539	0	0	1	57		
			ASYDF	2,025	1	0	1	75	2,147	1	0	1	80	2,158	1	0	1	80	1,376	1	0	1	51		
			T2S	3,011	1	0	1	75	3,190	1	0	1	80	3,202	1	0	1	80	2,235	1	0	1	58		
			T2M	2,870	1	0	1	72	3,040	1	0	1	76	3,051	1	0	1	76	2,130	1	0	2	55		
	1000mA	40 W	T3S	2,978	1	0	1	74	3,155	1	0	1	79	3,166	1	0	1	79	2,210	1	0	2	57		
			T3M	2,948	1	0	1	74	3,123	1	0	1	78	3,134	1	0	1	78	2,187	1	0	2	56		
			T4M	2,888	1	0	1	72	3,059	1	0	1	76	3,071	1	0	1	77	2,143	1	0	2	55		
			TFTM	3,002	1	0	1	75	3,180	1	0	1	80	3,192	1	0	1	80	2,228	1	0	2	57		
			ASYDF	2,684	1	0	1	67	2,843	1	0	1	71	2,854	1	0	1	71	1,991	1	0	2	51		
			T2S	3,649	1	0	1	101	3,876	1	0	1	108	3,429	1	0	1	95	2,504	1	0	1	70		
			T2M	3,478	1	0	1	97	3,694	1	0	1	103	3,267	1	0	1	91	2,387	1	0	1	66		
			T3S	3,609	1	0	1	100	3,833	1	0	1	106	3,390	1	0	1	94	2,477	1	0	1	69		
20C (20 LEDs)	530mA	36 W	T3M	3,572	1	0	1	99	3,794	1	0	1	105	3,356	1	0	1	93	2,451	1	0	2	68		
			T4M	3,500	1	0	2	97	3,717	1	0	2	103	3,288	1	0	1	91	2,402	1	0	1	67		
			TFTM	3,638	1	0	1	101	3,864	1	0	1	107	3,418	1	0	1	95	2,496	1	0	1	69		
			ASYDF	3,252	1	0	2	90	3,454	1	0	2	96	3,056	1	0	2	85	2,232	1	0	1	62		
			700mA	47 W	T2S	4,502	1	0	1	96	4,776	1	0	1	102	4,794	1	0	1	102	3,065	1	0	1	65
					T2M	4,290	1	0	1	91	4,552	1	0	1	97	4,569	1	0	1	97	2,921	1	0	1	62
					T3S	4,452	1	0	1	95	4,723	1	0	2	100	4,741	1	0	2	101	3,031	1	0	1	64
					T3M	4,407	1	0	2	94	4,675	1	0	2	99	4,693	1	0	2	100	3,000	1	0	1	64
	T4M	4,318			1	0	2	92	4,581	1	0	2	97	4,598	1	0	2	98	2,939	1	0	1	63		
	TFTM	4,488			1	0	2	95	4,761	1	0	2	101	4,779	1	0	2	102	3,055	1	0	1	65		
	ASYDF	4,012			1	0	2	85	4,257	1	0	2	91	4,273	1	0	2	91	2,732	1	0	1	58		
	ASDF	5,963			1	0	1	80	6,327	1	0	1	84	6,351	1	0	1	85	4,429	1	0	1	61		
	1000mA	74 W	T2M	5,683	1	0	2	76	6,029	1	0	2	80	6,052	1	0	2	81	4,221	1	0	2	58		
			T3S	5,896	1	0	2	79	6,256	1	0	2	83	6,280	1	0	2	84	4,380	1	0	2	60		
			T3M	5,837	1	0	2	78	6,193	1	0	2	83	6,216	1	0	2	83	4,335	1	0	2	59		
			T4M	5,719	1	0	2	76	6,067	1	0	2	81	6,090	1	0	2	81	4,248	1	0	2	58		
			TFTM	5,944	1	0	2	79	6,307	1	0	2	84	6,330	1	0	2	84	4,415	1	0	2	60		
			ASYDF	5,314	1	0	2	71	5,638	2	0	2	75	5,660	2	0	2	75	3,947	1	0	2	54		

Performance Data

Lumen Ambient Temperature (LAT) Multipliers

Use these factors to determine relative lumen output for average ambient temperatures from 0-40°C (32-104°F).

Ambient		Lumen Multiplier
0°C	32°F	1.02
10°C	50°F	1.01
20°C	68°F	1.00
25°C	77°F	1.00
30°C	86°F	1.00
40°C	104°F	0.98

Projected LED Lumen Maintenance

Data references the extrapolated performance projections for the **DSXW1 LED 20C 1000** platform in a **25°C ambient**, based on 10,000 hours of LED testing (tested per IESNA LM-80-08 and projected per IESNA TM-21-11).

To calculate LLF, use the lumen maintenance factor that corresponds to the desired number of operating hours below. For other lumen maintenance values, contact factory.

Operating Hours	0	25,000	50,000	100,000
Lumen Maintenance Factor	1.0	0.95	0.93	0.88

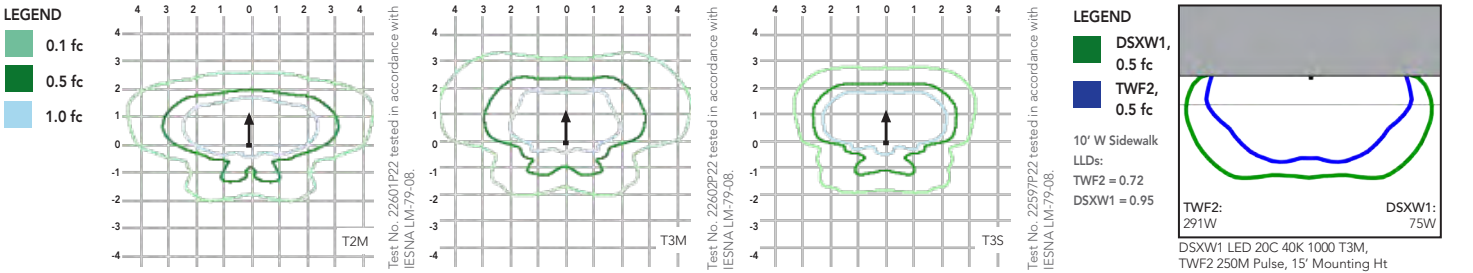
Electrical Load

LEDs	Drive Current (mA)	System Watts	Current (A)					
			120V	208V	240V	277V	347V	480V
10C	350	14 W	0.13	0.07	0.06	0.06	-	-
	530	20 W	0.19	0.11	0.09	0.08	-	-
	700	27 W	0.25	0.14	0.13	0.11	-	-
	1000	40 W	0.37	0.21	0.19	0.16	-	-
20C	350	25 W	0.23	0.13	0.12	0.10	-	-
	530	36 W	0.33	0.19	0.17	0.14	-	-
	700	47 W	0.44	0.25	0.22	0.19	0.15	0.11
	1000	75 W	0.69	0.40	0.35	0.30	0.23	0.17

Photometric Diagrams

To see complete photometric reports or download .ies files for this product, visit Lithonia Lighting's D-Series Wall Size 1 homepage.

Isofootcandle plots for the DSXW1 LED 20C 1000 40K. Distances are in units of mounting height (15').



Options and Accessories



T3M (left), ASYDF (right) lenses



HS - House-side shields



BSW - Bird-deterrent spikes



WG - Wire guard



VG - Vandal guard



DDL - Diffused drop lens

FEATURES & SPECIFICATIONS

INTENDED USE

The energy savings, long life and easy-to-install design of the D-Series Wall Size 1 make it the smart choice for building-mounted doorway and pathway illumination for nearly any facility.

CONSTRUCTION

Two-piece die-cast aluminum housing has integral heat sink fins to optimize thermal management through conductive and convective cooling. Modular design allows for ease of maintenance. The LED driver is mounted to the door to thermally isolate it from the light engines for low operating temperature and long life. Housing is completely sealed against moisture and environmental contaminants (IP65).

FINISH

Exterior parts are protected by a zinc-infused Super Durable TGIC thermoset powder coat finish that provides superior resistance to corrosion and weathering. A tightly controlled multi-stage process ensures a minimum 3 mils thickness for a finish that can withstand extreme climate changes without cracking or peeling. Available in textured and non-textured finishes.

OPTICS

Precision-molded proprietary acrylic lenses provide multiple photometric distributions tailored specifically to building mounted applications. Light engines are available in 3000 K (80 min. CRI), 4000 K (70 min. CRI) or 5000 K (70 CRI) configurations.

ELECTRICAL

Light engine(s) consist of 10 high-efficacy LEDs mounted to a metal-core circuit board to maximize heat dissipation and promote long life (L88/100,000 hrs at 25°C). Class 1 electronic drivers have a

power factor >90%, THD <20%, and a minimum 2.5KV surge rating. When ordering the SPD option, a separate surge protection device is installed within the luminaire which meets a minimum Category C Low (per ANSI/IEEE C62.41.2).

INSTALLATION

Included universal mounting bracket attaches securely to any 4" round or square outlet box for quick and easy installation. Luminaire has a slotted gasket wireway and attaches to the mounting bracket via corrosion-resistant screws.

LISTINGS

CSA certified to U.S. and Canadian standards. Rated for -40°C minimum ambient.

DesignLights Consortium® (DLC) qualified product. Not all versions of this product may be DLC qualified. Please check the DLC Qualified Products List at www.designlights.org to confirm which versions are qualified.

WARRANTY

Five year limited warranty. Full warranty terms located at www.acuitybrands.com/CustomerResources/Terms_and_conditions.aspx.

Note: Actual performance may differ as a result of end-user environment and application. All values are design or typical values, measured under laboratory conditions at 25°C. Specifications subject to change without notice.

